



# The Matrix

Official Newsletter of the  
Sacramento Mineral Society  
Sacramento, California



October 2006  
Volume 66, No. 10



## We Have a Roster!! 2007 SMS Nomination Committee Report

A big THANK YOU goes out to our SMS members who have stepped up to the plate to volunteer to become more involved in the Society by agreeing to sit on the Board of Directors in 2007. Printed at right the current slate for the 2007 SMS Board.

But just because we have names to fill the spaces, it doesn't mean you can't still volunteer to get involved. This editor (and member of the Nomination Committee) must confess to a secret wish that we have multiple people willing to fill each position; this would result in the first in SMS history run-off election. And it can still happen. If you feel you could help the Club operations, please let us know. The SMS membership has until November to confirm the final Board for 2007, and installation of those officers will occur at the SMS Christmas Dinner in December.

If you wish to nominate someone or would like to be a nominee yourself, contact one of the Committee members: Tarance at (916) 519-2590, Carolyn at (916) 482-1345, or Kris at (916) 451-4806. Please keep in mind that if you want to nominate someone else, you must first have his or her permission. You may also nominate someone or volunteer for a position at the October or November meetings.

Keep in mind that we are still developing a roster of names of members who are willing to get involved by filling Chairs or participating on committees throughout the next year. Many of you have talents and experience that we don't yet know about. Consider putting those talents to use by getting more involved in your club and volunteering to help the club grow and function. Please take a few minutes to review the list of positions on page two of *The Matrix* and think about just where you might be able to help. Filling out the *Time and Talent Survey* is another way to let us know where you can assist. The survey was emailed in September to those members with an email address on file, and additional copies are available in the clubhouse. Please note: We are especially in need of help with membership and in handling the mailing of the monthly newsletter.

The talent and expertise of all of our members is needed and appreciated throughout the year. You don't have to have experience to help out; past officers and chairs will be available to give you advice. You CAN make a difference by volunteering and agreeing to become more active in your club's operations and functions. Volunteering is the greatest compliment you can give to your club to show how much you care about its growth and prosperity and the many members we call family.

### Get involved – SMS is YOUR Club, Too!



The right to copy is freely granted to AFMS-affiliated clubs and its members with proper credit given to *The Matrix*.  
All articles by the editor unless otherwise noted.



## 2007 Board Nominees

President:	Kevin Beghul
Vice President:	Frank Fawcett**
Secretary:	Joy Fergoda
Treasurer:	Sheldon Shuper
Bulletin Editor:	Kris Jarusevicius
Federation Director:	Rolf Zschonerig** & (shared) Kimberly Andrews**
Past President:	Les Clark
Directors (2007-2008):	Carl Zimmerman Tarance Beguhl

(Directors for 2006-2007 still in place are:  
Linda Baglin, Dixie Christenson  
and Lana Paulhamus.)

\*\*Tentative

## IN THIS ISSUE

Page 2	President's Message Did You Know...?
Page 3	October Birthstone News From Manti
Page 4	September Business Meeting
Page 5	September Educational Meeting All That Sparkles...
Page 6	What's the Purpose? The Trona Pinnacles
Page 7	A Magic Rock Club
Page 8	New Members
Page 9	New Life in Old Bone SMS Roster Updates SMS Members Support KVIE Camp Paradise
Page 10	Earth Science Week Field Trip Brazilian Gem Adventure
Page 11	CO-OP / Field Trips
Page 12	SMS Calendar Libraries Aren't Just for Kids! SMS Time and Talent Survey Crystals Galore!
Page 13	Shows and Events
Page 14	SMS Playtime
Page 15	Christmas Dinner Registration Form October Shop Steward Schedule



**Sacramento Mineral Society**  
 P.O. Box 160544  
 Sacramento, CA, 95816

Founded February 1936 ♦ Colors: Blue & Gold

Member of:

American Federation of Mineralogical Societies  
 California Federation of Mineralogical Societies  
 CO-OP Field Trip Association

**Location and Meeting Times:**

SMS Clubhouse  
 4205 LeMay Street, Rancho Cordova, CA

Business Meeting:  
 2<sup>nd</sup> Thursday of every month, 7:00 p.m.

Educational Meeting:  
 3<sup>rd</sup> Thursday of every month, 7:30 p.m.

**Visitors are always welcome**

Shop open Saturday and Wednesday  
 10:00 a.m. to 2:00 p.m.; Shop fee: \$7.00

Dues: \$30.00 per calendar year

Web Site: [www.sacmineralsociety.org](http://www.sacmineralsociety.org)

**Mission Statement**

The Sacramento Mineral Society is dedicated to promoting interest in and increasing knowledge and understanding of mineralogy and the related sciences and lapidary and the related arts; to promote and organize field trips, to encourage the study of geological formations and the collection and preservation of minerals as they occur in nature.

**SMS Goal**

The goal of the Sacramento Mineral Society is to gain and maintain an active membership of adults and juniors who are interested in mineralogy and the related sciences, and lapidary and the related arts, and who will eventually carry our club into the future. Our club is about learning and teaching. We all have something to learn and each of us has something to teach. We share our passion for minerals, fossils and the lapidary arts.

**President's Message**

Greetings to all club members, new club members, prospective club members, and friends.

Fall is here, our annual November show on November 10th, 11th and 12th is only 45 days away. We will be asking for your help to make this show the most successful show yet. The floor plan is complete and will include 37 dealers with a lot of interesting displays and demonstrations.

Remember: SMS members who have not helped with the show or whom have not volunteered to work during the show will not be able to get in to the show for free.

This is YOUR club and everyone is welcome to attend the Board Meetings on the second Thursday of each month at the clubhouse. If you have any suggestions or ideas, please present them at the Board Meeting or let one of the governing board members know.

To all of those who have signed up for the CO-OP field trip to Ichthyosaur State Park and Museum near Fallon, Nevada, with a next-day field trip, please let your Field Trip Chairman, Les Clark, know that you will be attending so he knows how many to expect. His phone number is (916) 421-4752. The dates of the trip are October 7th and 8th—Saturday and Sunday.

Have a great month of October!

— Sheldon Shuper

**Did You Know...**

**...That monthly Business Meetings aren't limited to only the members of the SMS Board?**

The monthly Business Meeting, held on the second Thursday of each month, is the place where the needs of the club are discussed and decided on. There are numerous agenda items discussed each month, but time is allotted for new business at each meeting. But the Board can't do it all alone. The input of our membership is vitally important to the decision-making process and benefits all our members by sharing different perspectives and ideas.

Attending the monthly meeting is the best way to share your concerns and ideas that can ultimately affect the direction the club goes into the future — how we grow, how we change, and what we offer our members and the public. We want to hear from the membership and greatly value your suggestions, ideas an input. We welcome and encourage you to attend and become more involved in the operation of your club.

**Next Board Meeting: Thursday, October 12, 2006, 7:00 p.m.**

**See you there!!**

**2006 Board Members**

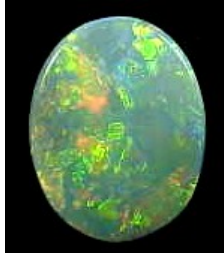
President: Sheldon Shuper (916) 383-9153  
 Vice President: Carl Zimmerman (916) 739-1279  
 Secretary: Carolyn Davis (916) 482-1345 [bb1doc@hotmail.com](mailto:bb1doc@hotmail.com)  
 Treasurer: OPEN (Sheldon Shuper, Acting Treasurer)  
 Federation Director: Barbara Foskett (916) 685-4111 [jfosback@aol.com](mailto:jfosback@aol.com)  
 Editor: Kris Jarusevicius (916) 451-4806 [sms-editor@pacbell.net](mailto:sms-editor@pacbell.net)  
 Past President: Les Clark (916) 421-4752  
 Directors 2006-2007: Linda Baglin (916) 685-8132 [LollieLinda@yahoo.com](mailto:LollieLinda@yahoo.com)  
 Dixie Christenson (916) 455-0421 [gildedcat@sbcglobal.net](mailto:gildedcat@sbcglobal.net)  
 Lana Paulhamus (916) 372-5117  
 Directors 2005-2006: Mike Hunerlach (916) 989-4653 [mphunerlach@comcast.net](mailto:mphunerlach@comcast.net)  
 Richard Davis (916) 482-1345 [bb1doc@hotmail.com](mailto:bb1doc@hotmail.com)

**Committees and Chairs**

By-Laws: Sheldon Shuper  
 Barbara Foskett  
 Les Clark  
 Display: Carl Zimmerman  
 Field Trip Coordinator: Les Clark  
 Shop Foreman: Mike Hunnerlach  
 Groundskeeper: Carl Zimmerman  
 2006 Show Coordinator: Sheldon Shuper  
 Librarian/Historian: Frank Fawcett  
 Greeters: Linda Baglin  
 Sheldon Shuper  
 Scholarship: Lisa Hammersley  
 Mike Hunerlach  
 Sheldon Shuper  
 Shop Advisor: Stan Henneman  
 Membership: Barbara Foskett  
 Webmasters: Tarance & Kevin Beguhl  
 Mailing: Tony & Millie Ivanovich  
 Juniors: OPEN  
 Advertising: Janice Marzolf  
 Publicity: Tarance Beguhl  
 Sunshine: Carl Zimmerman  
 Dan Brown

## Happy Birthday October Babies! October's Birthstone: Opal

Opal is known as the "stone of happy dreams and changes". It inspires creativity and imagination, and instills faithfulness and loyalty. It is said to strengthen the memory, alleviate fevers, stimulate the circulation and strengthen the eyesight.



The Romans believed opal was the symbol of hope and purity, calling it *cupid paederos* (child as beautiful as love), and kept the wearer safe from disease. Arabs believed that opals fell from heaven in flashes of lightening, and the ancient Greeks believed it had the power of giving foresight and the light of prophecy to their owners. Cleopatra is said to have worn an opal to attract the attention of Mark Antony. In the Middle Ages, young, fair-haired girls wore opals in their hair to protect its lovely blonde color and Medieval writers believed opal could render its wearer invisible when the need arose. The Aborigines of Australia have many myths and legends about opals, and believe they have spiritual value, representing something an ancestor left behind as a sign of his or her presence. Somewhat conversely, in the 19th century opal became known as a gem of ill omen and was connected with assorted misfortunes of European royalty; it had a reputation as a thief's stone, with the power to simultaneously strengthen one's eyesight and make the wearer invisible.

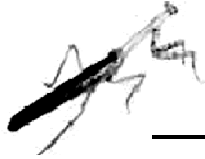
The word "opal" comes from the Sanskrit *upala* for "valuable stone", the Greek *opallios* for "color change", and the Latin *opalus* or "precious stone". "Opal" is also the Indian word for "stone".

Opal is one of the most popular gemstones. There are two distinct types of opal, common and precious. The way the silica particles form determines its type. In precious opal, silica particles are packed in regular rows and layers. A special characteristic of opals is their opalescence, a multi-color iridescence that changes with the angle of observation. These iridescent flashes of green, blue, aqua and sometimes yellow or red colors are referred to as "fire". The sparks of color are caused by tiny spheres of the mineral cristobalite layered in siliceous jelly.

Most opal is 50-65 million years old, dating back to the Cretaceous period when dinosaurs roamed the earth. Opal formed as silica from decomposing rocks mixed with ground water which formed a gel that collected and hardened in underground cavities and fissures. Opal's chemical formula is  $\text{SiO}_2 \cdot n\text{H}_2\text{O}$ . The stones have a high water content – as much as 30% – thus requiring care when working with them as a heat can evaporate the

water. The stone is sensitive to pressure and knocks, and is relatively soft, a 5.5-6.5 on the *Mohs Scale*.

Quality Opals are found in Czechoslovakia, Brazil, Guatemala, Honduras, Japan, and in the U.S. (Nevada), but most of the world's jewelry opals come from the Australian Outback.



## News from Manti

Well, another third Thursday of the month and there were humans all around my safe hide-a-way. The conversations I overheard before the meeting contained words like "sparkly", "sparkler" and "diamonds are a girl's best friend". I was anxious to learn more about this subject. I recognized many members who often come to the meetings but there were many new members and some visitors. *FLASH!* Have you heard about the *Crater of Diamonds State Park* in SW Arkansas near Murfreesboro? It is the eighth largest diamond-bearing deposit in surface area in the world.

The largest documented diamond found in the park is the 40.23-carat "Uncle Sam". This week a first-time visitor from Oklahoma found a flawless 2.21 canary yellow diamond. Marvin Cutler, a highway patrolman, of Nowater, OK, went to the site with his family. It was a spur of the moment thing that went well. He found the diamond after digging a bucket and a half of soil. His find is the largest gem of the eighty-four found in 2006. He joked that he would name his diamond "Okie Dokie Diamond", while his second choice would be "Old Yeller". The gem is about the size of a peanut M&M candy.

You may want to use your search engine to find out more about this wonderful site located in our own United States.

~ Love, Manti

Nevada County Gem & Mineral Society Present

### Earth's Treasures

2006

Sat. & Sun., October 14 & 15

10:00 am to 5:00 pm

39th Annual Show

Exhibits of Rocks, Minerals,  
Carved & Faceted Stones  
and More



Mineral Identification  
Half Hourly Prizes  
Jewelry Sales  
Demonstrations

Childrens' Games  
Silent Auctions  
Mineral & Fossil Sales  
Lapidary Equipment Sales

### Raffles and door prizes

Admission: Adults \$1.00 Children FREE

Plenty of Free Parking  
YOTMC Breakfast Sunday

The Nevada County Fairgrounds • Main Exhibit Hall  
11228 McCourtney Road • Grass Valley, CA  
Show Chairman: Cliff Swenson (530) 272-3752



## Business Meeting—Thursday, September 14, 2006

With a quorum of Board member present, the meeting was called to order at 7:00 p.m. and the *Pledge of Allegiance* was said.

President **Sheldon Shuper** read the minutes from the previous month via *The Matrix*. Minutes were corrected to reflect that it was **Don Tadlock** (not Dan) who recently donated a saw, and that the dates of the meetings listed were for the show set-up meetings, rather than the general show meetings. With these corrections, the minutes were approved.

Upon mention of the Club opening up wire-wrap classes to non-members, a discussion began regarding possible liability issues that might develop. Sheldon indicated that we have liability coverage for the number of people that might be on our premises, however additional insurance would be required if more than 300 people were present at a club function. (*Editor's note: follow-up confirms that our premises insurance will cover a member and a guest, up to a maximum of 300 people at an event.*)

The CFMS *Tax Advisor News* article was also discussed, pointing out possible concerns about retaining our tax exempt status if the club is not following certain parameters that may include opening our classes to non-members. **Barbara Foskett** agreed to contact the author, Mike Kokinos, to obtain clarification on specific questions brought up during the discussion. We will follow up at the October Board meeting.

The Treasurer's Report was reviewed and it was pointed out that it is costing more every year to keep the club operating. It is felt that a majority of the membership is unaware of how much it costs to keep up with operating expenses (including rising rent and utilities) for the clubhouse and shop. This is a burden that the club did not have in years past when the Society met at a local high school and had no formal clubhouse or shop facilities. It was agreed that we need to get the word out to the membership and continue to ask them to get more involved.

November Show Update: Once again, a motion was made to increase the total table footage to 792 feet (from 750 feet) in order to accept additional dealers. The motion was MSA. The number of dealers has been increased to 37. A diagram of the *Scottish Rite Center* has been created showing the placement of all dealers and club tables. The design allows for sufficient space between dealers so as not to overcrowd aisles; we expect no dealer complaints with the plan. It will be available for viewing by the membership and dealers; if any changes are needed they must be pointed out in advance as no last-minute changes or moves will be made. Barbara pointed out that we are still receiving requests from dealers; we are saving these names for next year. All show positions will be defined in advance so those helping out will know what they should be doing, and all volunteers and assistants will be asked to remain focused on their duties during their assigned times. Sheldon has received the paperwork for the food inspection and will be filling it out and delivering it to the County's Environmental Management Department this week.

The Open House/BBQ/Tailgate event was a success. Total profit from food, rock sales and the auction was \$239.00.

The names of those volunteering to help at the *Vino Piazza* event in Lockeford has been shared with the organizers of the event and is being distributed to those who volunteered. **Jim Foskett** will be operating the silent auction at the event on Saturday from 10:00 a.m. to 2:00 p.m. We still hope to find additional help so the auction may be presented on Sunday as well.

**Les Clark** indicated that there will be a pot luck dinner at the campground during his field trip to Ichthyosaur State Park in October. He is also gathering information about the camping area. The field trip has been opened up to the CO-OP. It is important that those planning to attend call Les in advance to let him know they will be attending.

**Kris Jarusevicius** gave an update on the progress of the Nominating Committee. A few seats still need to be filled at this time. The slate of current nominees for the 2007 Board will be noted on the whiteboard in the clubhouse this weekend. The committee is still attempting to develop a list of club members willing to help out in all areas of the club and its functions and Kris pointed out the *Time and Talent Survey* she created and hopes all members will complete it and turn it in.

A discussion was had about creating a committee of at least two people to focus on getting advertising for *The Matrix* in 2007. These positions would focus on obtaining newsletter advertising only and will not be responsible for advertising for our club show. Sheldon feels the club needs to find new ways to increase income.

Kris proposed that the bulletin be e-mailed to all SMS members with an e-mail address on file instead of sending it out via the U.S. mail in order to help save some of the costs of printing and postage. The motion was MSA. Beginning in January, a printed copy of the newsletter will no longer be sent to members with an e-mail address on file unless there is a specific request for it.

Sixteen new members were approved for membership. (Wow!)

Barbara shared some items included in the September CFMS newsletter including the article regarding tax exempt status, some new videos available, and the creation of the Demonstrator's Directory; she hopes that we will be able to provide the form to sign up for the directory in *The Matrix*.

Sheldon indicated that we once again need to attempt to recruit more volunteers to be Shop Stewards and/or Shop Assistants. It would be helpful to have two people work every shop day so one could man the saw shop while the other watches over members using the other equipment in the shop and be available to train.

Barbara discussed two places she and Jim evaluated for the holiday dinner. The *Cosmopolitan Café* was mentioned, however it exceeds our per person price. *Cassiday's Restaurant* on Folsom Blvd. is willing to turn their restaurant over to us for the evening at the price we're looking for and thus is a strong possibility. We are still hoping members will make other suggestions for restaurants we can consider, although a decision needs to be made as soon as possible.

The meeting adjourned at 9:12 p.m.

— Minutes submitted by Kris J. in absence of the Secretary.

## Educational Meeting Thursday, September 21, 2006

President **Sheldon Shuper** began the evening with an update on the planning for this year's show. He shared with the group a proposed letter to be given to all volunteers to assist them while working the show. The sign-up lists for show help was also passed around so those who have not yet signed up may do so.

Sheldon confirmed that he has checked with our insurance provider to be sure we'll be properly covered and has also filled out and submitted the permit required by the County of Sacramento to sell food at the show.

**Jim Foskett** then made a statement to the group indicating that it costs about \$700 per month to maintain the club's shop. He asked that everyone please volunteer where they can as every little bit of assistance helps.

The *Pledge of Allegiance* was said. **Barbara Foskett** introduced the two guests present and indicated that we had sixteen new members this month. Three were present at this time and were presented with their new membership packets and introduced: **Gene Gardner, Becky Moreland, and Matt Power.** (Editor's note: before the end of the evening, six more of our new members had arrived.)

**Kris Jarusevicius** gave an update on the status of the nominations for Board positions for 2007. We currently have all a volunteer to fill each of the Board positions, although two positions are tentative at this time. The current slate of nominees is posted on the white board in the clubhouse.

Barbara indicated that she and Jim recently visited *Cassiday's Restaurant* on Folsom Boulevard and that it is a strong possibility as a venue for the club's holiday dinner. They are willing to turn over the entire restaurant to the club for the evening. Jim made a motion to accept *Cassiday's* as the venue; with no objections from the floor, the motion was passed. *Cassiday's* is located at 5090 Folsom Boulevard, near *Trader Joe's*. A sign-up sheet was passed around in attempts to begin determining how many might be attending. More information, including a menu and registration form, will be provided in the near future.

Kris then "had to brag" about the club bulletin and the awards at the AFMS. **Les Clark's** article, *A Rockhound's Wander Through Nevada*, took 8<sup>th</sup> place in the AFMS adult article category; Kris herself took 1<sup>st</sup> place in the new editor category for the newsletter entire. Kris asked that everyone please attempt to read the bulletin when it comes out and hopes that others will consider writing and submitting articles to include in future issues.

The presentation this evening was by SMS scholarship awardee, **Beth Sehan** speaking on the topic of diamonds. Please see the article following for a review of the presentation.

**Reminder: Please take no SMS tools, supplies or other items from the SMS grounds for personal use without first notifying and getting approval for the loan by a Board member.**

## All That Sparkles...

—By Kim Hofer

Diamonds, the topic of September SMS Educational Meeting, was shared via a wonderful slide show and talk by SMS's 1<sup>st</sup> Place Scholarship winner, **Beth Sehan**. She was introduced by her Sacramento State Geology Professor (and SMS member) **Lisa Hammersley**.

"...*Adamas*" Beth began, the Greek root for the word Diamond, includes meanings such as unconquerable, invincible, and adamant, and signifies beauty, strength, brilliance, rarity, light, power and wealth. She showed us slides and told some of the fascinating historical facts surrounding diamonds dating back to the 4<sup>th</sup> century B.C. and some of the legends surrounding the Hope Diamond (67 carats), the Great Star of Africa Diamond (530.2 carats), the Ocean Diamond from Africa (5.51 carats), the Tiffany Diamond (128 carats), and the Aurora Collection of Diamonds ranging from .13 to 2.88 carats – of all colors.

We learned how diamonds (carbon) are formed 100-200 kilometers below the earth's surface at 650,000-870,000 psi, and at 1652-2372 degrees Fahrenheit. It is thought that the diamond, once formed, is carried closer to earth's surface by the action of magma from volcanoes. Diamonds are mined in many countries including Australia, South Africa, Brazil, India, Borneo, Russia, Botswana, and Zaire. Australia produces the highest amount of carats and most are industrial diamonds, with the exception of the rare red and pink diamonds found there. South Africa's mines are regulated and only so much is allowed to be mined per year.

So why do they sparkle? That's the physics of light travel within the diamond. We learned about reflection, refraction (bending of the light), and dispersion. Light travels faster through a diamond than any other transparent media. A well cut diamonds can *trap* a lot of light and push it out through a flat surface – the top (or table).

When choosing a diamond one should look for cut, clarity, color, and carat. Beth showed many colors and cuts (10 different cut shapes) of diamonds, and also "abnormalities" like carbon inclusions, formed crystals, fissures, and cloudiness inside them that usually only a trained eye with proper equipment could detect. She also gave us interesting information on "treated" diamonds, CZs (cubic zirconia), cultured diamonds, and moissanite. How to tell them apart? Not so easy.

One can test for hardness, specific gravity, supporting metals, and the amount and type of fire a diamond shows. Here's an interesting fact: when a diamond is placed over a black line, that black line will disappear because of how a pure diamond will bend the light. We also learned that a real diamond may have flashes of single colors, like red or blue, whereas a CZ will show a rainbow instead. Impressive to know how old diamonds are – roughly 2 billion years old!

Suddenly, I'm feeling very young.

AFMS [www.amfed.org](http://www.amfed.org)

Federation News

CFMS [www.cfmsinc.org](http://www.cfmsinc.org)

## What's The Purpose?

—By Steve Weinberger, Central Office

Someone recently asked me "What's the purpose of the AFMS?" Good question and one that caused me to do a little research so I could give the individual the "official" answer. My probe took me back to the AFMS Articles of Incorporation, which state...

*"Article II - Objects and Purposes*

*Section 1. GENERAL PURPOSES: To promote popular interest and education in the various Earth Sciences, and in particular the subjects of Geology, Mineralogy, Paleontology, Lapidary and other related subjects, and to sponsor and provide means of co-ordinating the work and efforts of all persons and groups interested therein; to sponsor and encourage the formation and international development of Societies and Regional Federations and by and through such means to strive toward greater international good will and fellowship."*

That statement was written almost sixty (60) years ago, and we're still holding true to it. The number of regional federation members has grown to seven and through their efforts as well as our own, we're educating the public through local clubs, shows, field trips, newsletters, websites, etc. We're also helping the field "grow" through our scholarship foundation with two dozen students receiving financial assistance each year.

I've had the statement added to the newsletter (page 3) and it will appear there from now on each month so you can refer to it easily. I've also asked Marty Hart, the AFMS webmaster, to place it on the website ([www.amfed.org](http://www.amfed.org)) so that visitors can learn more about why we're around.

AFMS Newsletter, 10/06

### Stockton Lapidary & Mineral Club's 55th Annual *Earth's Science Show*

**October 28 & 29, 2006 – Sat. Sat. 10-5, Sun. 10-4**

Admission \$4.00

Children 12 & under OR in uniform, free with adult

San Joaquin County Fairgrounds, Bldg. 2  
1658 Airport Way, Stockton, CA

**Dealers—Rocks—Minerals—Fossils—Beads  
Tools—Jewelry Supplies—Books  
Plenty of Children's Activities  
Many Beautiful Display Cases**

\$1.00 off Admission with this coupon  
Free Parking near the Building

*Food, Fun and Excitement for All*

## The Trona Pinnacles

—Submitted by John Martin

Palmdale Gem and Mineral Club, PLAC South

However it may appear to you, a visit to the Trona Pinnacles will be a journey into one of the most unusual geologic wonders in the California Desert. This unique landscape consists of more than 500 tufa (calcium carbonate) pinnacles rising from the bed of the Searles Dry Lake basin. These tufa spires, some as high as 140 feet, were formed under water 10,000 to 100,000 years ago when Searles Lake formed a link in an interconnected chain of Pleistocene lakes stretching from Mono Lake to Death Valley.

The Trona Pinnacles were designated by the Department of the Interior as a National Natural Landmark in 1968 to protect one of the nation's best examples of tufa formation. The area is managed by the BLM to protect its scenic values and has become a popular filming location for movies and commercials.

The area is approximately 20 miles east of Ridgecrest. Access is from a BLM dirt road (RM143) that leaves SR 178, about 7.7 miles east of the intersection of SR 178 and the Trona-Red Mountain Road. The 5-mile long dirt road from SR 178 to the Pinnacles is usually accessible to 2-wheel drive vehicles; however, the road may be closed during the winter months after a heavy rain.

The Pinnacles are at about 2,000 feet above sea level in the Western Mojave Desert making it an ideal place to explore in the fall, winter, and spring months. Visiting early in the morning and evening is especially dramatic as are nights with a full moon.

Summer temperatures often exceed 115°F, so if you plan on visiting in summer try the early morning or evening hours. Bring plenty of water (at least 2 gallons of water/person), and if you do not have 4WD, stay out of the sand washes. Quite a few cars have been stranded in the wide sand wash that divides the main Pinnacles group.

A network of dirt roads wind throughout the site and provide numerous vantage points from which to view and photograph the Pinnacles. A .50-mile hiking trail leads into the heart of the Pinnacles for a close-up view of these spires and the surrounding desert environment. The hike is not difficult, but you should wear sturdy shoes.

Primitive camping is permitted and campers are encouraged to use existing campsites and fire rings and to pack out all trash. If you plan on a campfire, bring your own firewood. Camping is limited to 14 days. The only facilities is a vault type toilet. There are no other services.

Operate your motor vehicle and mountain bike on existing routes to protect this fragile place. Cross country travel will destroy vegetation and create scars on the landscape that may take years to heal. Shooting is prohibited to ensure the safety of other visitors.

To view the on-line article go to: <http://www.blm.gov/ca/ridgecrest/trona.html>.

CFMS Newsletter, 10/06. Edited slightly due to space limitations.

## A Magic Rock Club

From Napa Gems, 1978 (month not known), via Amador Nugget 1/98.

*The following article was written in 1978 by Joe Meade as a President's Message for the Napa Valley Rock & Gem Club. It is just as fresh and current today as it was then. Perhaps it will give you something to remember when you are asked to do a job or help out at a club function...or, do you believe that you, too, belong to A MAGIC ROCK CLUB?*

Once upon a time, in a beautiful valley, there was a magic rock club, or at least many of its members thought it was. Why did they think so? Because many strange and wondrous things happened in their club. After all, they only had to bring themselves to the club meeting once a month, and they found at the beautiful meeting hall their chairs all lined up neatly for them, the place ablaze with light, the big coffee pot perking away, the cookies and many other delicious "goodies" all set out and ready for them. The microphones were all hooked up and buzzing quietly, and the President, Secretary and Treasurer's tables all set up. It was indeed wondrous. The members need only to sit down, and soon they were told all the bills had been paid, correspondence answered, and problems solved. They were brought up to date on what was happening, not only in their area but something called "The Federation" always took care of defending their favorite collecting areas. They didn't know much about this "Federation", but they did know somebody in their club always looked out for their interests and they were content.

This indeed was a wondrous club as there was hardly ever anything to argue about during the short pesky thing they called the "business meeting". Somehow the problem, whatever it might be, was solved whether they paid attention to what was happening or not. After all, if they all said "Aye" to whatever motion was being made, and they all always did, they could gripe about it later when they really found out what they had voted on.

Anyhow, they were anxious to get on to the rest of the meeting that they liked so well, like the passing out of beautiful and wondrous pieces of gemstone or finished jewelry as door prizes. Though many had been members for years, they were not sure exactly where these prizes came from, but it was probably more magic since they always appeared.

But that was not all, as some liked the "committee reports" because some of them were really interesting. They could find out about a forthcoming field trip; find out how much money their club had in the bank; find out what the next program would be; about the latest news on their big annual show; and many other interesting things. During the parts they were not interested in they could always talk to their neighbor, but if anyone talked during the part that they were interested in, they could always shush them.

But the best part was when they could have all the goodies and crunchies and hot tea or coffee that was ready for them. Then they could visit with their friends and enjoy the program that was always something interesting. There were films, there were slides, there were knowledgeable speakers, there were bingo games for gemstones, there were "silent auctions" where slabs of

gemstone from the four corners of the world could be had for a few pennies, and there were picnics and pot-lucks. Many were only vaguely aware of how these things came about, but after all, wasn't it a magic rock club?

Ah, it was indeed a fortunate thing to be a member of this club many members felt. The telephone would ring, and they would be told of anything of interest to them regarding the club. They all knew that if a member was ill, flowers, cards and messages from their club would appear to express their concern for them. If they wanted to go on a field trip, and many did, the location was already surveyed for them, and they knew what gems they might find, how to find them, what they looked like, whether they could park, what to bring and everything they needed to know.

Not only did many members feel lucky to be a part of a magic rock club, but they were also proud! After all, didn't they often see their club mentioned in the newspaper, hear it discussed on the radio, and wasn't it always a feature of the Fair? People would come from far and near to ooh and aah at the beautiful gems in the cases with their club's name on them. Many never even bothered to go see for themselves, as they knew that the cases would always appear at the appointed time. The building would be available; the kitchen would be clean, the electric wiring would like up and test itself; the big heavy tables would march into place; and a 1001 other things would somehow happen whether they were there or not.

But that was not all! Every month a newsletter would suddenly appear in their mailbox. This was really a wondrous thing. Many were amazed at how the news, articles of interest, and other things would assemble themselves, type themselves, run themselves through reproduction, staple, address, stamp and mail themselves too! The members knew that if they had not paid attention or even come to the last meeting, everything that happened would be in their club paper.

However, there was one long standing mystery in this magic rock club that had never been solved by any President or Chairman.. This was the strange thing that happened every time the word volunteer was mentioned! Practically the whole membership would suddenly find something immensely interesting on either the floor or the ceiling and commence to gaze intently at them for long periods of time. However, there were always certain members who knew there was really nothing there to see, just as they had learned the truth about Santa Claus long ago, so one of them would say "I volunteer" and immediately the other members lost interest in whatever had intrigued them about the floor or ceiling.

If you really want to know the real secret of this magic rock club, you can find the name of nearly all the magicians listed on the inside of the cover of your magic (substitute your club name) newsletter. Of course all are not listed there, because many of them have quietly and unheralded "made things happen".

CFMS Newsletter, 10/06

## Introducing Our Newest Members

What an extraordinary month the SMS has had! Sixteen new members were approved for membership this month, ten of which signed up the day of our Open House event. Be sure to welcome all of our new members as you see them at the clubhouse and shop.

**Amy Byrd** is interested in everything our club has to offer, and has been involved in related activities for over 20 years. She has a collection of beads, lampwork and glass art. She heard about our club at *Gem Faire*, and is willing to help out with juniors' activities and social events. Amy works for Compucom at Intel and lives in Sacramento.

**Yolanda Calle** and her son, **Dylan Calle**, reside in Sacramento. Yolanda is self-employed and is interested in all of our offerings. She is willing to help out in many areas of the club: publicity, juniors' activities, membership and the annual show. Thirteen-year old Dylan is also interested in exploring all offerings the club has to offer. They, too, heard about the club at *Gem Faire*.

**Gene Gardner** is retired and has been interested in minerals and lapidary for 36 years. He has a small rock collection and is willing to help out on field trips and at the annual show, in social activities, membership and possibly publicity. He resides in Sacramento and heard about us at *Gem Faire*.

**Robert Hall** also works at Intel and lives in Sacramento. He's been interested in mineralogy, lapidary and geology for a couple of years but has no collection at this time. He is willing to help out with the club's website and like many of the others here, heard about us at *Gem Faire*.

**Roxanne Hatfield**, another recruit from *Gem Faire*, resides in North Highlands and works for the Sacramento City School District. She's been interested in the Earth Sciences since the age of seven and has a collection of minerals. She's willing to help out in juniors' activities, field trips, educational programs, the annual show and membership.

**Oneatha Herne** has been interested in mineralogy and lapidary for a few years and is willing to help out with club programs. She resides in Sacramento and works for the Sacramento Superior Court. She heard about the club via a posting on the Sacramento Superior Court's Intranet.

**Kimberly Jenness-Roberts** lives in Citrus Heights and works for the State Controller's office. She's interested in lapidary and especially in wire-wrap. Kimberly also heard about us at *Gem Faire*.

**Anne-Marie Leduc** comes to visit us from Yuba City, indicating the local club was lacking in that it didn't have a shop for use by its members. Anne-Marie has been interested in lapidary, field trips and silversmithing for about six months and has already been busy learning cabbing in the shop. She is willing to help out with membership and publicity. She learned about us through the club website.

**Becky Moreland** learned about the club while visiting *Gem Faire* with Gene Gardner. She resides in Sacramento and has been interested in mineralogy, lapidary and field trips for about

one year. She's willing to lend assistance at the annual show, on field trips, and in the areas of membership, social and jewelry making.

**Matt Power** is interested in fossils and heard about the SMS from the Sacramento State Geology Club. He resides in Sacramento, is a student, and is interested in mineralogy and geology. He has a collection of fossils.

**Crystal** and **John Radcliffe** reside in Yuba City and learned about the club via a Google search on the internet. Crystal has been interested in mineralogy and lapidary for about one year and has a collection of semi-precious stones. She is interested in attending field trips and is willing to help out with the club show. John is interested in lapidary and geology but has no current collection of material.

**Virginia Roach** of Sacramento is interested in lapidary and has been for about four years. She heard about us at *Gem Faire* and is willing to help out with the annual show.

**Chris Simmons** of Elk Grove, heard about us at the gem show and is interested in all activities the club has to offer. Chris is retired, has been interested in minerals and the lapidary arts for about six months, and is willing to help with club publicity.

**Doris Wong** lives in Fair Oaks and is employed by the San Juan Unified School District. She's interested in mineralogy and field trips and has a collection of rocks and minerals. She's willing to lend assistance in field trips and educational areas.

Welcome everybody!!!

## KATERINA'S TREASURES

FINE JEWELRY & GIFTS



SILVER & GOLD JEWELRY

SCREAM BODY JEWELRY ~ LOOSE GEMS

MONTANA SILVERSMITHS ~ CANDLES

CELTIC JEWELRY ~ BEADS ~ MOUNTINGS

WIRE WRAPPING SUPPLIES ~ TOOLS

HAND MADE & WIRE WRAP JEWELRY

NATURAL STONE CABOCHON JEWELRY

CUSTOM ORDER JEWELRY & REPAIR



**S M S MEMBERS GET  
25% DISCOUNT**

**8516 MADISON AVE  
FAIR OAKS, CA  
(916) 967-4000**



## New Life in Old Bone

Tina Smith's carved bone designs, mostly along a Native American theme, have been very popular with SMS members and visitors. While the designs appear complicated, she creates them by using very simple techniques. Tina will again be sharing these techniques at a bone carving workshop on Saturday, October 21<sup>st</sup>, 10:00 a.m. to 2:00 p.m.

Her hands-on, friendly instruction allows everyone attending to come away with a unique, handmade design. Participants will have the choice of creating one of three different designs – a feather, a bear or a turtle. Bone to be used for carving will be provided, but each person attending should bring a piece of leather or some other lap protector. If you have a *Dremmel* tool, bring that as well. Tina will have some extra *Dremmel* tools available for use at the workshop for those that need them.

The workshop will be held outdoors on the SMS grounds. The class is limited to five participants in order to allow for individual attention, so contact Tina in advance to sign-up by phoning (916) 391-0485. A \$7.00 shop fee should be paid on the day of the workshop.

## SMS Roster Updates

*A monthly update of SMS member information.*

Please make note of the following changes or corrections to the SMS club roster.

### Address and Phone Number Change:

#### Frank Fawcett

8071 Sacramento Street, Apt. 27, Fair Oaks, CA 95628  
(916) 967-5809

Changes or corrections should be forwarded to the editor at [sms-editor@pacbell.net](mailto:sms-editor@pacbell.net) or by phone at (916) 451-4806. New member info may be obtained by contacting the editor or the membership chair.

## Contra Costa Mineral & Gem Society Gem & Mineral Show and Sale

**Saturday, Sunday:**  
**November 4-5, 2006**  
**10:00 a.m. – 5:00 p.m.**

**Centre Concord**  
Clayton Fair Shopping Center  
5298 Clayton Rd.  
Concord, CA 94521

**Admission \$3.00**  
Under 12 w/Adult, Scouts in uniform, Free

## SMS Members Supporting Public Television through Their Creativity

As noted in the August edition of *The Matrix*, two of our club members were accepted as artists for the 2006 KVIE Art Auction. Janis Marzolf and Kevin Beguhl both had juror selected wire-wrap cabochons up for auction during the televised weekend-long event in September.

Janis's gold-wrapped purplerite pendant



Janis Marzolf's purplerite pendant



*Never Ending Flame* labradorite pendant by Kevin Beguhl.

ultimately sold for \$125.00, while Kevin's silver-wrapped piece of labradorite, titled *Never Ending Flame*, topped out with a bid of \$150.00.

Celebrating its 25<sup>th</sup> anniversary this year, KVIE's Art Auction is recognized as a premier Northern California art venue. All monies collected from the auction support

public television and the arts in the Sacramento region.

Congratulations to both Janice and Kevin. Good job!

## Camp Paradise

—By Janis Marzolf

Camp Paradise had the same great instructors it's had in the past. The classes for the first week included: silversmithing, casting, wire-wrapping, PMC, enameling, glass bead-making, soft stone carving and faceting. Lois, who has taught the silversmith classes both at Camp Paradise and ZZYX for many years, focused on chain-making. It's sad to say that she has decided that this will be her last year teaching for CFMS retreats. Many who have attended the retreats regularly are very disappointed that she will no longer be teaching. She has produced beautiful pieces and many of her chains are unique.

Both Dixie Christenson and myself attended the first week. Dixie spent her time working on silver. I got hooked on making beads my first day there. I spent one morning wire-wrapping a bracelet and ring and another on enameling a couple of pieces that turned out to be disasters. I spent the remainder of my time on bead making, which I enjoyed immensely.

The week-long retreat is a bargain for a lapidary vacation at \$250 for the week, although the facility itself is the pits. The area is surrounded by loose silt which sticks on everything and makes a mess, the mattresses are in need of replacement, one of the showers was broke and the bathrooms were a mess. But the food was good and the classes were fantastic. Many of the same people attend year after year so it is reminiscent of a family reunion and it's great to see many of the same smiling faces. As always, I had a great time.

## Earth Science Week Field Trip "Rockin' Along the River"

This year's Earth Science Week public field trip sponsored by the Nevada Bureau of Mines and Geology, will be held on October 7th and 8th. The tour will start at Crystal Peak Park in Verdi and will roughly follow the path of the Truckee River east to Wadsworth, Nevada, stopping at several sites of geologic interest along the way. In keeping with the 2006 National Earth Science Week theme "Be a Citizen Scientist," the focus will be on discussing ways to investigate natural geologic features in a scientific manner to come up with plausible answers to questions about Earth's history. There will be opportunities to collect samples of rocks along the way, including a variety of river rocks, granite, basalt, andesite, rhyolite, sandstone, diorite, and many varieties of volcanic tuff. Geoscientists will accompany us on the field trip to answer questions and discuss their research.

This approximately 100-mile round trip will take us to sites located along the Truckee River corridor and will attempt to show how geologists reconstruct the geologic history of the area from the rocks exposed along the route. All stops are adjacent to paved or gravel roads accessible by high-clearance vehicles, but some roads may be rocky or rutted. Field trip participants must bring their own insured, high-clearance vehicles, water, lunch, snacks, hats, sunscreen, and sturdy walking shoes.

Field trip participants will be required to sign a waiver of responsibility prior to participating in the field trip. This form may be downloaded and printed out at [www.nbmng.unr.edu/esweek/waiver.pdf](http://www.nbmng.unr.edu/esweek/waiver.pdf). Complete and sign the form and bring it with you to the field trip. Some of the sites we will visit will also be *Earth Cache* sites. See [www.earthcache.org](http://www.earthcache.org) for information about this program.

For more information about Earth Science Week, visit the website at: [www.earthsciweek.org](http://www.earthsciweek.org). The site includes information on activities, contests, a "tool kit" and other ways to get involved.

Register for the field trip online at [www.nbmng.unr.edu/esweek/su6.php](http://www.nbmng.unr.edu/esweek/su6.php) or call (775) 784-6691, ext. 131. The complete road log for the trip will be available online in September. For more information about the field trip content, call D.D. at (775) 784-6691, ext 134.

Via the CO-OP 9/5/06

## Brazilian Gem Adventure—June 26 to July 9, 2007

The Natural History Museum of Los Angeles County is offering a trip to Brazil June 26<sup>th</sup> to July 9<sup>th</sup>, 2007, that includes a visit to the *Brazil Gem Show* in Governador Valadares. The tour is being led by Dr. Tony Kamph, Curator of Mineral Sciences at the *Natural History Museum of Los Angeles County*, and Laurindo Rauber, owner/operator of *Rauber Turismo*, Belo Horizonte, Brazil. Dr. Kamph has led thirteen trips to Brazil and is very knowledgeable about its gem and mineral deposits; Mr. Rauber is a former history professor who specializes in trips for mineral collectors to the gem mines of Brazil.

Minas Gerais is the source of some of the finest gems and minerals ever recovered. During the 12-day tour, visits will be made to many mines, and participants will have many opportunities to both collect and purchase beautiful gems and minerals.

The tour starts in Belo Horizonte, the bustling capital of the state. A stop is made in Itabira, a center for both iron and emerald mining. Then it's off to Governador Valadares, one of the world's great tourmaline mining centers. While there, participants will attend the *Brazil Gem Show*, where some of the finest gems and minerals that Brazil has to offer can be seen.

Further north, the tour visits Brazil's most important gem center, Teofilo Otoni, and continues on to the rich aquamarine deposits of Marambaia, and back south to Ouro Preto, the center of imperial topaz mining. The adventure finishes in Belo Horizonte with visits to more dealers and a farewell party.

The tour is planned for those on a budget with respect to both time and money, but this is no "cut-rate" tour. Participants will stay in comfortable accommodations at every stop, including some first-class hotels, and the food is excellent. This adventure will provide enough wonderful memories to last a lifetime.

Tour cost is \$2,200 per person, excluding airfare, based on double occupancy. A \$500 per person deposit is required to secure your reservation, and full payment is due by May 1, 2007.

Visit <http://www.hnm.org/gmc/brazil.htm> to check out highlights of the 2005 and 2006 tours, review the tour itinerary, and find a registration form. Additional information may be obtained by contacting the *Gem & Mineral Council* Coordinator, Jean Brandt, at [jbrandt@nhm.org](mailto:jbrandt@nhm.org) or by calling (213) 763-3326.

Obtained on the web at <http://www.hnm.org>

### Diamond Pacific Tool Corporation

P.O. Box 1180

2620 W. Main Street

Barstow, CA 92312

Tel. 760-255-1030 Fax 760-255-1077

Home of the "Genie."

[www.diamondpacific.com/](http://www.diamondpacific.com/)

### PEARSON'S

### U.S. LAPIDARY & JEWELER'S SUPPLY INC.

For ALL Your Jewelry & Lapidary Needs

5523 Hemlock St. Sacramento CA. 95841

Classes for Lost Wax Casting, Silversmithing,  
Wire Wrapping and Mold Making Available.

Hours: Tues. - Fri. 10 A.M. To 6 P.M.

Sat. 10 A.M. To 5 P.M.

(916) 331-2086 FAX 334-2077

[www.pearsons-uslj.com](http://www.pearsons-uslj.com)

# CO-OP

[www.coop.5u.com](http://www.coop.5u.com)

## Field Trips

Reminders: Call the field trip leader in advance to verify details – climate and weather, tools, safety concerns, clothing, vehicle requirements, etc. Wear your name badge and sign in with the leader. All participants must sign a *Consent and Assumption of Risk Waiver of Liability* form upon arriving at the meeting site and non-CFMS members must show proof of personal liability insurance. Obey the AFMS Code of Ethics, Land Use Policy, and safety rules. Always use common sense. Additional information may be obtained on the CO-OP web site.

**CO-OP Note: The Field Trip previously planned to Soapstone Ridge in October has been cancelled until further notice.**

- Sunday,  
October 1      **Lincoln, CA.** Rock Sale—miscellaneous rocks and picture jasper. Property of Iris Geiser, 176 East 7th Street, Lincoln. Sale runs 8:30 a.m. to 3:30 p.m. Yard rock 20¢/lb.; picture jasper 25¢/lb. Bring small pick, buckets or other containers. Street parking limited, please carpool. Information: (916) 645-3060 or 645-2834, [rossy1029@sbcglobal.net](mailto:rossy1029@sbcglobal.net).
- Saturday,  
October 7      **Sibley Volcanic Regional Preserve**, the main source of the volcanic rocks in which are found Berkeley “blue” agates. Sponsored by the *Marin Mineral Society*, and the *North Bay Field Trip Organization*, all attendees must be a member of a CO-OP or NBFT club. Meet in the park’s parking lot at 10:30 a.m. for a geologic walking tour (approx. 2.75 miles). Bring hiking shoes, sun protection, a bag lunch, drinks, but no collecting tools. Rain cancels the trip. Phone John Stockwell, at (510) 526-1646 for directions or if you have questions.
- Saturday &  
Sunday,  
October 7-8      **Ichthyosaur State Park near Berlin, NV**, for fossil tour and collection of fluorite, orange calcite, garnet and magnesium (brucecite). Sponsored by the *Sacramento Mineral Society*, all participants must be a member of a CFMS club. Approx. 4 ½ hours from the Sacramento area, participants should meet at Middlegate, NV, at the intersection of Hwys 50 and 361 at 8:00 a.m. on Saturday, October 7<sup>th</sup>; we will caravan to the campsite. Overnight camping \$4.00 per night. Motel accommodations and meals available in Gabbs, about 25 miles from camp. Potluck dinner Saturday night. High clearance vehicles are required, but 4WD not necessary. Fee for the fossil tour is \$3.00 per person. Additional trips to an old fluorite mine, Copper Mt. Mine, and a magnesium mine will be included and time permitting, a surprise site on the way home. Please RSVP the trip leader, Les Clark, at (916) 421-4752 if you are planning to attend.
- Saturday &  
Sunday,  
October 14-15      **Searles Lake, CA.** Sponsored by the *Searles Lake Gem & Mineral Society* as part of the 65<sup>th</sup> annual *Gem-O-Rama*. Trips on both days include: the “Mud Trip” for cluster and barrel hanksite, trona, borax, \$8/car; “Blow Hole” for hanksite, halite, borax sulfohalite, \$8/car; “Pink Halite”, in brine, beneath hard salt, \$10/car. For more information, see the web site at: <http://www1.iwvisp.com/tronagemclub/FLYER.htm>.
- Saturday,  
October 21      **Clear Creek, CA** for plasma agate, jadeite and calcite roses. Sponsored by the *Santa Clara Valley Gem & Mineral Society* and NBFT, R.S.V.P. is required to Marc Mullaney, [geologistm@aol.com](mailto:geologistm@aol.com) or cell: (408) 691-1584. Meet at 8:00 a.m. at D Mart at 6900 Chestnut Street, corner of East 10<sup>th</sup> Gilroy. Bring sledge hammer, chisels, collecting bags and buckets, safety glasses or goggles, heavy gloves; study shoes, long pants, lots of water, sunscreen and lunch suggested.
- Saturday,  
October 28      **Skillman, CA**, for argillite, a compact sedimentary rock sometimes called “Claystone”. Sponsored by the *Nevada County Gem & Mineral Society*, meet at the Skillman Horse Campground at 9:00 a.m. Note: rain or snow within 48 hours will cancel trip. Contact the field trip leader or visit the CO-OP website for directions to the meeting place. Led by Jonathan North, please contact him at [jonnorth@comcast.net](mailto:jonnorth@comcast.net) or (cell) (916) 768-0137.
- Wednesday  
to Sunday,  
November  
22-26      **Afton Canyon, east of Barstow, CA**, for jasper, fluorite, other items. Sponsored by the *Mother Lode Mineral Society*, members’ guests are allowed but must join the Mother Lode club (\$15.00). Schedule: arrive on Wednesday, potluck turkey barbeque on Thursday, field trips on Friday and Saturday, depart Sunday. All participants should meet at the camping site. Contact the trip leader or visit the CO-OP website for directions. Dry camping (RV’s, tents, etc.). 4x4 and pick-ups required, will carpool as necessary. Please RSVP the trip leader, Al Troglin by phone at (209) 838-7725.
- Wednesday  
to Sunday,  
November  
22-26      **Wiley Well Area, Near Blythe, CA** for all types and colors of agate and jasper, crystal-filled goedes, botryoidal psilomelane, fire agate, chalcedony roses, zeolite, crystal-filled amygdules, calcite rhombs, petrified wood and much more. Sponsored by the *CFMS Field Trips, South*. The Wiley Well District is 10 miles SW of Blythe and one of the most popular collecting areas on the Colorado Desert. Daily trips from the campgrounds to the various collecting sites starting at 8:00 a.m. each morning. Dry camping – no water, services, hookups, toilets, but additional camping and accommodation is available from the field trip leader. Thanksgiving Day potluck dinner in the early afternoon. Led by Bob Fitzpatrick, please R.S.V.P to (951) 845-3051 or [RURocky2@aol.com](mailto:RURocky2@aol.com) if you are planning to attend. Lots of additional information and directions to the campsite are available from the leader or on the CO-OP website.

### SMS Calendar

All events held at the SMS clubhouse unless otherwise noted.  
Workshop costs noted are for SMS members.  
Contact the workshop Leader for non-member prices.

#### October

- 12<sup>th</sup>—Thursday Business Meeting, 7:00 p.m.  
14<sup>th</sup>—Saturday Wire Wrap with Kevin Beguhl  
Beginning Cab, 10:00 a.m.-2:00 p.m., \$15.00  
19<sup>th</sup>—Thursday 2006 SMS Show Meeting, 6:30 p.m.  
19<sup>th</sup>—Thursday Educational Meeting, 7:30 p.m., Silent Auction  
Preview Screening of "Rockhounds: The Movie"  
21<sup>st</sup>—Saturday Bone Carving with Tina Smith—New Designs!!  
10:00 a.m.-2:00 p.m., \$7.00  
28<sup>th</sup>—Saturday Wire Wrap with Kevin Beguhl  
10:00 a.m.-12:00 noon: Beginning Cab, \$15.00  
12:00 noon-3:00 p.m.: Advanced Bracelet (Cab or Bead)  
\$23.00 if taken with Beginning Cab

#### November

- 4<sup>th</sup>—Saturday Show Finalization Meeting, 10:00 a.m.  
9<sup>th</sup>—Thursday SMS-Dealer Dinner, 6:00 p.m., Scottish Rite Temple  
9<sup>th</sup>—Thursday Business Meeting, 7:00 p.m., Scottish Rite Temple  
10<sup>th</sup>, 11<sup>th</sup> & 12<sup>th</sup>—64<sup>th</sup> Annual Golden Harvest of Gems Show  
Weekend Long Scottish Rite Temple  
16<sup>th</sup>—Thursday Educational Meeting, 7:30 p.m., Silent Auction  
Topic TBD  
25<sup>th</sup>—Saturday Wire Wrap with Kevin Beguhl  
Beginning Cab, 10:00 a.m.-2:00 p.m., \$15.00

#### December

- 9<sup>th</sup>—Saturday Wire Wrap with Kevin Beguhl  
Beginning Cab, 10:00 a.m.-2:00 p.m., \$15.00  
14<sup>th</sup>—Thursday Business Meeting, 7:00 p.m.  
21<sup>st</sup>—Thursday SMS Christmas Dinner & Installation of Officers  
Location: Cassidy's, 5090 Folsom Blvd., Sacramento  
(Note: Dinner is in lieu of Educational Meeting)

Shop open every Wednesday and Saturday  
from 10:00 a.m.-2:00 p.m.

Spread the word and bring a friend!

### SMS Time and Talent Survey

To help us get to know the membership of the *Sacramento Mineral Society* and to help us determine which of our members would be willing to help in club functions, we recently distributed a *Time and Talent Survey*. We're asking all members to take a few minutes to fill out the survey form before the end of the year.

The survey helps us to get to know the membership better and helps us know who to ask when we need help in certain areas of the Club's operation. Our members have an incredible variety of skills and talents and all of them can be used somewhere throughout the year.

We're asking all SMS members to fill out the *Time and Talent Survey*. The survey was recently distributed to all SMS members with an email address on file, and additional copies are available in the SMS clubhouse.

### Crystals Galore!

In El Dorado County when someone says "crystals," you usually think "quartz." You will find both local and worldwide quartz crystals in a Special Exhibit plus 40 other displays at the 23<sup>rd</sup> Annual Rock and Gem Show on October 21–22 at the El Dorado County Fairgrounds, 100 Placerville Drive, Placerville (off Highway 50).

Presented by the *El Dorado County Mineral and Gem Society*, the show will also have over 30 dealers selling and showing gems, minerals, jewelry, beads, fossils, amber, opals, carvings, lapidary material, equipment, supplies and, yes, quartz crystals.

Enjoy free ongoing demonstrations, free rocks and activities for children, gold panning, geode cutting and other events. The show has an amazing raffle with all proceeds going to the scholarship fund. Great food on the premises, and a fun time for the entire family.

Admission: adults \$3; free for kids 12 & under. Bring a wearable coat for a kid and get free adult admission. Show hours 10:00 a.m. to 5:00 p.m. both days.

For more information please visit [www.rockandgemshow.org](http://www.rockandgemshow.org) or call (530) 676-2472.

Press release from the El Dorado Gem & Mineral Society, 9/21/06

### Libraries Aren't Just for Kids!

Are you in need of information on an Earth Science-related topic? Are you looking for new ideas for jewelry making or displaying your rock and gem finds? Check out the SMS Library and you may find something that fits the bill!

SMS retains a library of media items related to rocks, gems, minerals, lapidary, rockhounding, field trips, geology, and more. Check out items free of charge at any time. Please just make sure to log the item you are borrowing in the binder provided. And don't forget to cross out the entry once you return it.

### El Dorado County Mineral & Gem Society **ROCK & GEM SHOW**

OCTOBER 21 & 22  
10 AM – 5 PM

**DEALERS – DISPLAYS – DEMONSTRATIONS  
SPECIAL CRYSTAL EXHIBITS**

**Fairgrounds, Placerville**  
Admission \$3, Kids 12/under Free  
Bring a Coat for a Kid and Get Free  
Admission for Adult



## Upcoming Shows & Events

- Oct. 1 **Fallbrook, CA.** *Fallbrook Gem & Mineral Society.* 123 W. Alva (FGMS Headquarters). Hours: 10-4. Web site: [www.fgms.org](http://www.fgms.org); there is a map on web site. Janice Bricker, (760) 728-1333.
- Oct. 6-8 **Big Sur, CA.** 15<sup>th</sup> Annual Big Sur Jade Festival. Highway One, opposite Sand Dollar Beach. Sponsored by the *South Coast Community Land Trust* and *Pacific Valley School PTO*. Free Admission. Hours: Fri. 12-6, Sat. 10-6, Sun. 10-5. Information: (831) 659-3857 or (831) 402-1143.
- Oct. 7-8 **Lakeside, CA.** *El Cajon Valley Gem & Mineral Society.* Lakeside Rodeo Grounds, 12584 Mapleview. Hours: 10-5 both days. David Newton, (619) 390-5054.
- Oct. 14 **West Hills, CA.** *Woodland Hills Rock Chippers 8<sup>th</sup> Annual Gem & Mineral Show.* 22700 Sherman Way. Hours: 10-5, Virginia Rotramel, (818) 790-7598, [show@rockchippers.org](mailto:show@rockchippers.org).
- Oct. 14-15 **Grass Valley, CA.** *Nevada County Gem & Mineral Society's "Earth's Treasures".* Nevada County Fairgrounds, 11228 McCourtney Road. Hours: 10-4 both days. Cliff Swenson, (530) 272-3752.
- Oct. 14-15 **Trona, CA.** *Searles Lake Gem & Mineral Society's "Gem-o-Rama".* Searles Lake Gem & Mineral, 13337 Main Street. Hours: Sat. 7:30-5, Sun. 7:30-4. Bonnie Fairchild, ((760) 372-5356, email: [jbfairchild@verizon.net](mailto:jbfairchild@verizon.net).
- Oct. 21-22 **Placerville, CA.** *El Dorado County Mineral & Gem Society's 23rd Annual Rock and Gem Show.* El Dorado County Fairgrounds, 100 Placerfille Drive. Hours: 10-5 both days. Special crystal exhibit, dealers, demos, displays, free children's activities. Email [info@eldoradomineralandgem.org](mailto:info@eldoradomineralandgem.org), web site: [www.rockandgemshow.org](http://www.rockandgemshow.org).
- Oct. 21-22 **Anderson, CA.** *Shasta Gem & Mineral Society.* Shasta District Fairgrounds. Hours: Sat. 10-5, Sun. 10-4. Alex Stoltz, (530) 474-4400.
- Oct. 21-22 **Whittier, CA.** *Whittier Gem & Mineral Society,* Whittier Community Center, 7630 Washington Avenue. Hours: 10-5 both days. Jay Valle, (626) 934-9764, email: [res19pnb@verizon.net](mailto:res19pnb@verizon.net).
- Oct. 27-28 **Northridge, CA.** *Del Air Rockhounds Gemboree.* United Methodist Church, 9650 Reseda Blvd. Hours: Fri. 3-9:30, Sat. 10-5. Bim Wendler, (818) 993-0119, Email: [del\\_air\\_rockhounds@yahoo.com](mailto:del_air_rockhounds@yahoo.com).
- Oct. 28-29 **Vista, CA.** *Vista Gem & Mineral Society.* 1200 Vale Terrace. Hrs: Sat. 10-5, Sun. 10-4. Mary Anne Mital, (760) 758-4599.
- Oct. 28-29 **Stockton, CA.** *Stockton Lapidary & Mineral Club.* San Joaquin County Fairgrounds, 1658 Airport Way. Hours: Sat. 10-5, Sun. 10-4. Jim Dunlap, (209) 478-0747. Show website: [www.Stocktonlapidary.com](http://www.Stocktonlapidary.com).
- Oct. 28-29 **Tulsa, OK.** *The Tulsa Rock & Mineral Society* (part of the Rocky Mountain Federation). Exchange Center 1 Bldg, Expo Square. Admission: \$5.00, children under 12 and scouts in uniform with parent free. Hours: Sat. 9-7, Sun. 10-5. Richard Jaeger, [rjgrsci@aol.com](mailto:rjgrsci@aol.com), or Peggy Stewart, [peggy22@cox.net](mailto:peggy22@cox.net).
- Nov. 4-5 **Concord, CA.** *Contra Costa Mineral & Gem Society.* Centre Concord, 5298 Clayton Road. Hours: 10-5 both days. Bill McKay (925) 439-8195 Email: [williamrmckay@hotmail.com](mailto:williamrmckay@hotmail.com).
- Nov. 4-5 **Ridgecrest, CA,** *Indian Wells Gem & Mineral Society.* Desert Empire Fairgrounds, 520 S. Richmond Road. Hours: 9-5 both days. Call (760) 375-8000 for RV parking. John De Rosa (760) 375-7905.
- Nov. 4-5 **Lancaster, CA.** *Palmdale Gem & Mineral Club's "Rock n Gem Roundup".* Antelope Valley Fairgrounds, 2551 West Avenue H. Hours: 9-5 both days. Susan Walblom, (661) 943-1861, [pgmc@antelecom.net](mailto:pgmc@antelecom.net).
- Nov. 4-5 **San Diego, CA.** *San Diego Mineral & Gem Society.* Al Bahr Shrine Center (behind Hampton Inn), 4550 Kearny Mesa Road. Hours: Sat. 9:30-5, Sun. 10-4. Wayne Moporhead, (858) 586-1637.
- Nov. 10-12 **Sacramento, CA.** *Sacramento Mineral Society's 64<sup>th</sup> Annual Harvest of Gems.* Scottish Rite Center, 6151 H Street. Hours: Fri. 9-5, Sat. 10-6, Sun. 10-4. Sheldon Shuper, (916) 383-9153, email: [jfosback@aol.com](mailto:jfosback@aol.com).

### Attention SMS Members: Help Advertise the 2006 SMS Show

Pick up a handful of our November 2006 Show Flyers from the on-duty Shop Steward (Wednesday or Saturday) for distribution at the shows you attend.

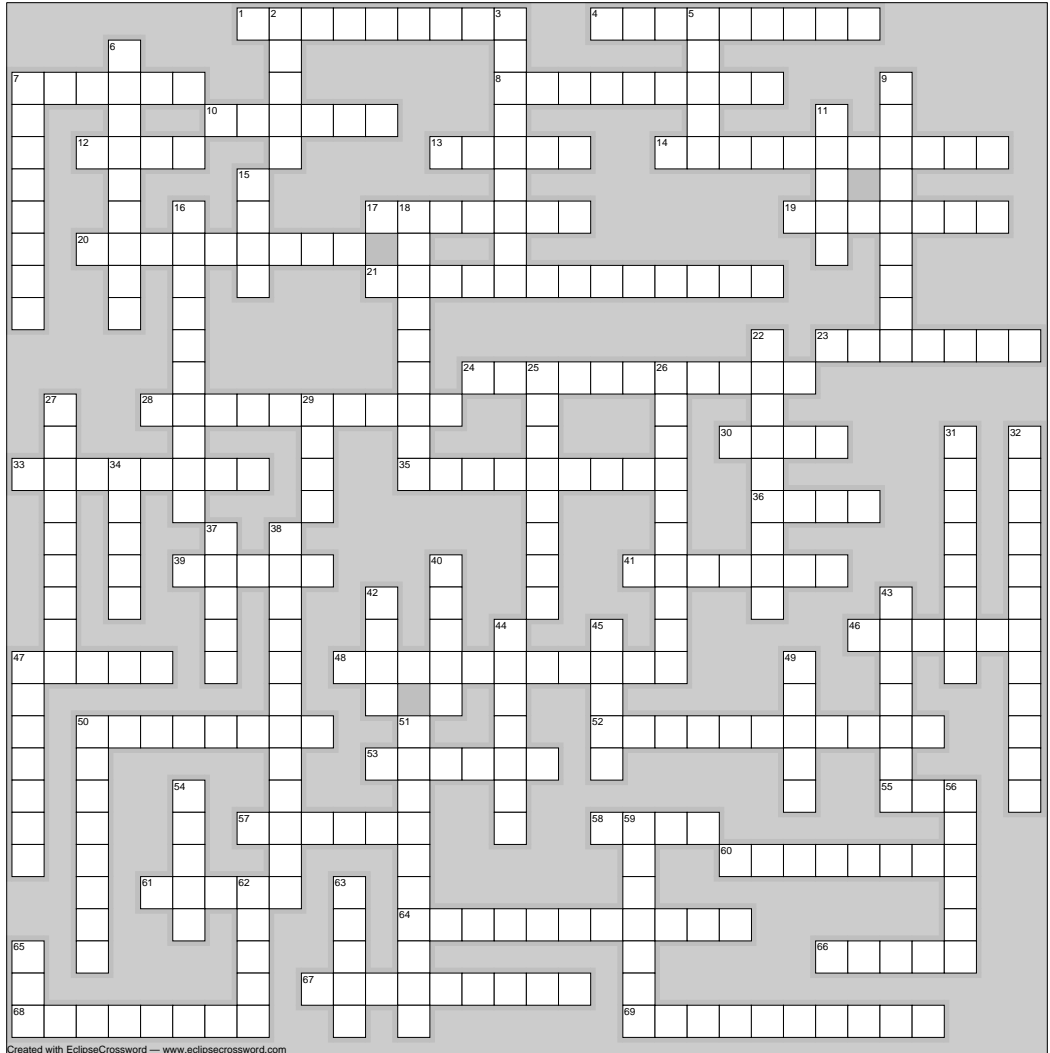
- Nov. 11-12 **Yuba City, CA.** *Sutter Buttes Gem & Mineral Society.* Yuba Sutter Fairgrounds, Franklin Hall, 442 Franklin Ave. Hours: 9-4 both days. Cliff Swenson, (530) 272-3752.
- Nov. 18-19 **Livermore, CA.** *Livermore Valley Lithophiles.* The Barn, 3131 Pacific Avenue. Hours: Sat. 10-6, Sun. 10-5. Joyce & Dick Friesen, (925) 447-8223, [friesenjoyce@ixinetcom.net](mailto:friesenjoyce@ixinetcom.net).
- Nov. 18-19 **Oxnard, CA.** *Oxnard Gem & Mineral Society.* Oxnard Performing Arts Center, 800 Hobson Way. Hours: Sat. 9-5, Sun. 9-4. Norb Kinsler, (805) 644-6450. Website: [www.ogms.net](http://www.ogms.net).
- Nov. 18-19 **Victorville, CA.** *Victor Valley Gem & Mineral Club.* San Bernardino County Fairgrounds, 14800 7<sup>th</sup> Street. Hours: Sat. 9-5, Sun. 9-4. Joe Kosik, (760) 241-0894, [gbeal5084@aol.com](mailto:gbeal5084@aol.com).

**SMS Play Time!**

Well, Jim, you asked for it, so here it is! The first ever (at least in this editor's reign) SMS crossword! Answers will be provided in the November edition of *The Matrix*.

**ACROSS**

- 1. Head honcho
- 4. Rockhound trek
- 7. Where Rockhounds sweat it out
- 8. You ain't nothing but a \_\_\_\_\_ (Sorry Elvis)
- 10. CFMS President
- 12. The state society
- 13. Coating of well-formed tiny crystals that look like sugar
- 14. Rock changed by heat or pressure
- 17. Polishing a flat surface; what a thirsty Rockhound could be doing
- 19. A thin streak across the surface
- 20. They leave big footprints
- 21. An annual (May) outing
- 23. A past president
- 24. Instructions: spin to shine
- 28. A long-time member of SMS
- 30. SMS color
- 33. August SMS event
- 35. A pink and black stone
- 36. SMS color
- 39. A measure of fineness of gold
- 41. A slicer
- 46. Common, dark, igneous rock
- 47. Crystals in a hard agate rind
- 48. Rock formed by layers of silt, pieces of rocks and sometimes fossils
- 50. The crafting of gems and minerals



Created with EclipseCrossword — www.eclipsecrossword.com

**DOWN**

- 2. Material not yet cut or polished
- 3. Southwest blue stone
- 5. Pocket magnifier
- 6. Molten material squeezed into rock cracks
- 7. It holds with wax
- 9. Sacred to the Lakota
- 11. Its most common colors are blue and gold
- 15. Stone of shifting color
- 16. Looks like a bunch of grapes or small marbles glued together
- 18. Otherwise known as gypsum
- 22. Studies rocks and rock layers to determine the earth's makeup
- 25. Actually means "bald head"
- 26. Study of minerals
- 27. A soft, carvable stone
- 29. Rockhounds congregate here to spend and swap
- 31. Needle-like crystals
- 32. The study of fossils and ancient life forms
- 34. On the street where we live
- 37. A side
- 38. Annual craft school
- 40. Popular cabbaging machine
- 42. Yearly \$\$\$
- 43. Spitting silver into a flask
- 44. Solid rock lying under loose sand or soil; where Fred lives
- 45. SMS mascot?
- 47. Aussie sister-club newsletter
- 49. An oyster's gift
- 50. A long-time SMS member
- 51. The "love" stone
- 54. A polishing compound
- 56. Native rock within which a mineral is imbedded or attached; our monthly
- 59. Remains or imprints of plant or animal life
- 62. Cavemen used rocks as \_\_\_\_\_
- 63. Solidified bug catcher
- 65. Manages open space land



**Christmas Dinner and Installation of Officers**

Our annual Christmas Dinner and Installation of Officers will be held this year at *Cassidy's*, 5090 Folsom Boulevard, Sacramento (corner of 51st Street and Folsom Boulevard), on Thursday, December 21, 6:30 p.m., sharp.

The evening will include the ceremony installing the new officers for 2007 as well as a gift exchange. All are also invited to participate in the exchange. Gifts should have a maximum cost of \$5.00 with a tag attached that reads "man" or "woman".

Reservation forms that include your dinner selection should be sent in as soon as possible to help with the planning, but no later than Saturday, December 9, 2006. And please be aware that there are no cancellations after that date. The dinner menu includes four different selections including a beverage and ice cream for dessert. Those requiring a vegetarian selection should contact **Barbara Foskett** at (916) 685-4111. Any other questions about the evening should also be directed to Barbara.

So come join us to celebrate the holiday season with club members and friends!



**October Shop Steward Schedule**

Wednesday		Saturday	
Oct. 4	Stan H.	Oct. 7	OPEN
Oct. 11	Carl Z.	Oct. 14	Tarance B.
Oct. 18	Craig M.	Oct. 21	Kevin B.
Oct. 25	Jim C.	Oct. 28	Craig M.

**Reminders:**

Glasses are always required while working in the shop. Be sure to sign in before using shop equipment. Report any problems to the Shop Steward of the day. Rock cutting is to be performed by Shop Stewards only.

**Reminder, especially to the Shop Stewards:**

Please be sure that all areas of the clubhouse and grounds are locked up properly before leaving.

We recently had "unexpected visitors" to the grounds, however all they apparently did was toss rocks around. It is important we make sure all buildings are secure before leaving the premises in order to protect our supplies and equipment.

*SMS Holiday Dinner and Installation of Officers*

**RESERVATION FORM**

**Thursday, December 21, 2006, 6:30 p.m. Sharp**

*Cassidy's Restaurant*

5090 Folsom Blvd., southwest corner of 51<sup>st</sup> Street and Folsom Blvd.  
In the Quality Market Shopping Center



**Please Send In Reservations By December 9, 2006. No Cancellations After December 9, 2006.**

Name \_\_\_\_\_ Telephone Number \_\_\_\_\_

Number of Reservations at \$15.00 each \_\_\_\_\_

Check enclosed for \$ \_\_\_\_\_ (Make check payable to SACRAMENTO MINERAL SOCIETY)

**Check Each Entree You Wish To Order.** The first three entrees include baked potato, vegetable, roll, and choice of soup or salad. All items include dessert and choice of beverage – coffee, tea or soda.

- \_\_\_\_\_ **Prime Rib** – 8 Ounces
- \_\_\_\_\_ **Broiled Salmon** – A boneless salmon filet delicately seasoned with lemon pepper spices
- \_\_\_\_\_ **Teriyaki Chicken** – Two boneless chicken breasts, broiled and basted with teriyaki sauce
- \_\_\_\_\_ **Enchilada-Taco Combination** – Two beef enchiladas and a beef taco with rice and beans, cheese and chips

**Choice** of soup or salad with first three entrees: Circle your choice: **SOUP SALAD**  
Circle salad dressing choice: **Ranch Blue Cheese Italian**

**Send Reservation and Check (made out to Sacramento Mineral Society) to:**  
**Barbara Foskett, 9450 Acapulco Way, Elk Grove, Ca 95624.**  
**Questions? Call (916) 685-4111.**



Sacramento Mineral Society  
P.O. Box 160544  
Sacramento, CA 95816

# *The Matrix*

October 2006



**Daylight Savings Time ends  
on October 29, 2006**

Be sure to set your clocks back one hour.

Thursday, December 21, 2006...  
Mark the date!!!

**The SMS Christmas Dinner  
& Installations of Officers**



Please get your reservations in as soon as possible.  
Reservation form available on page 15 of this issue of *The Matrix*.

---